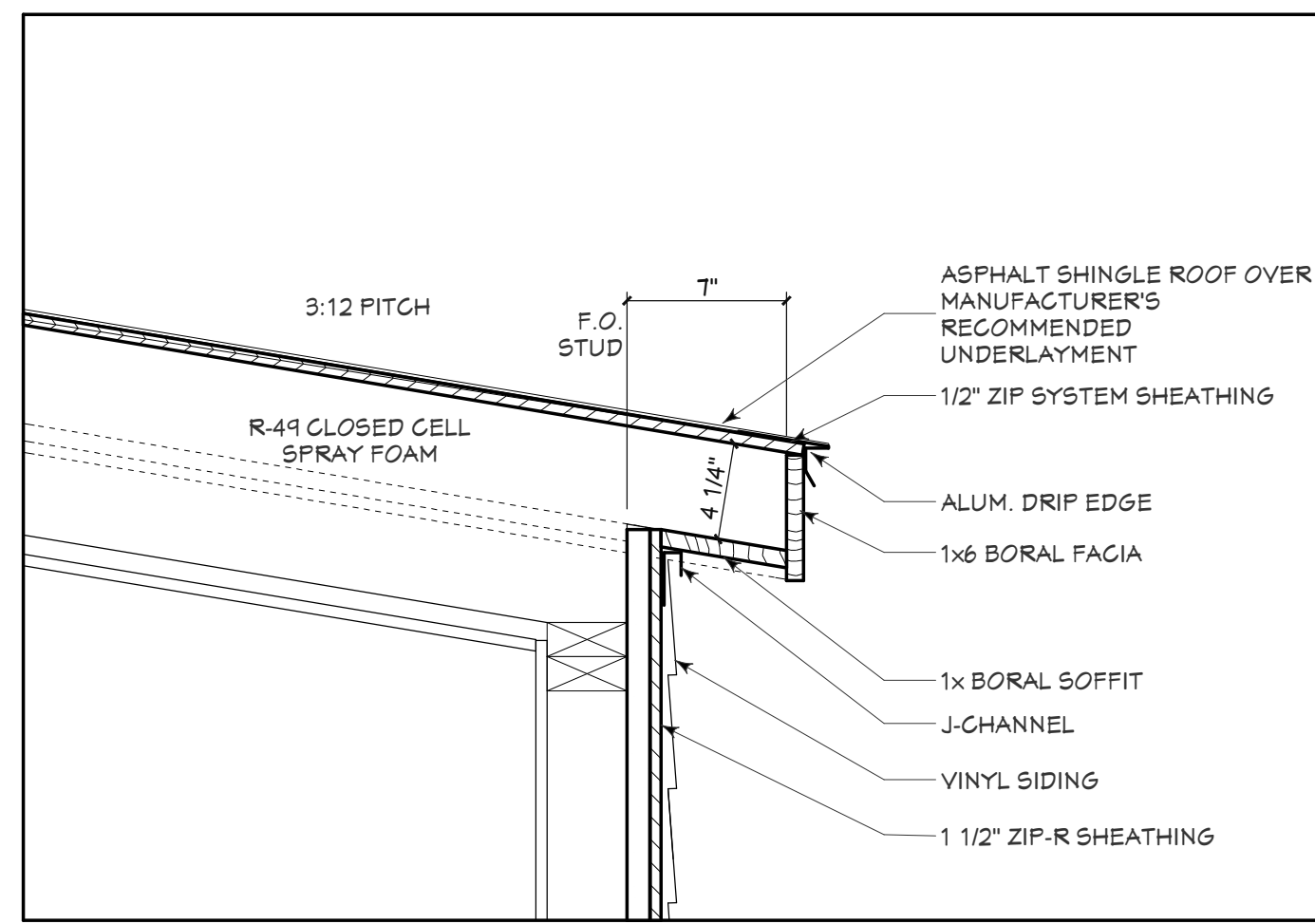
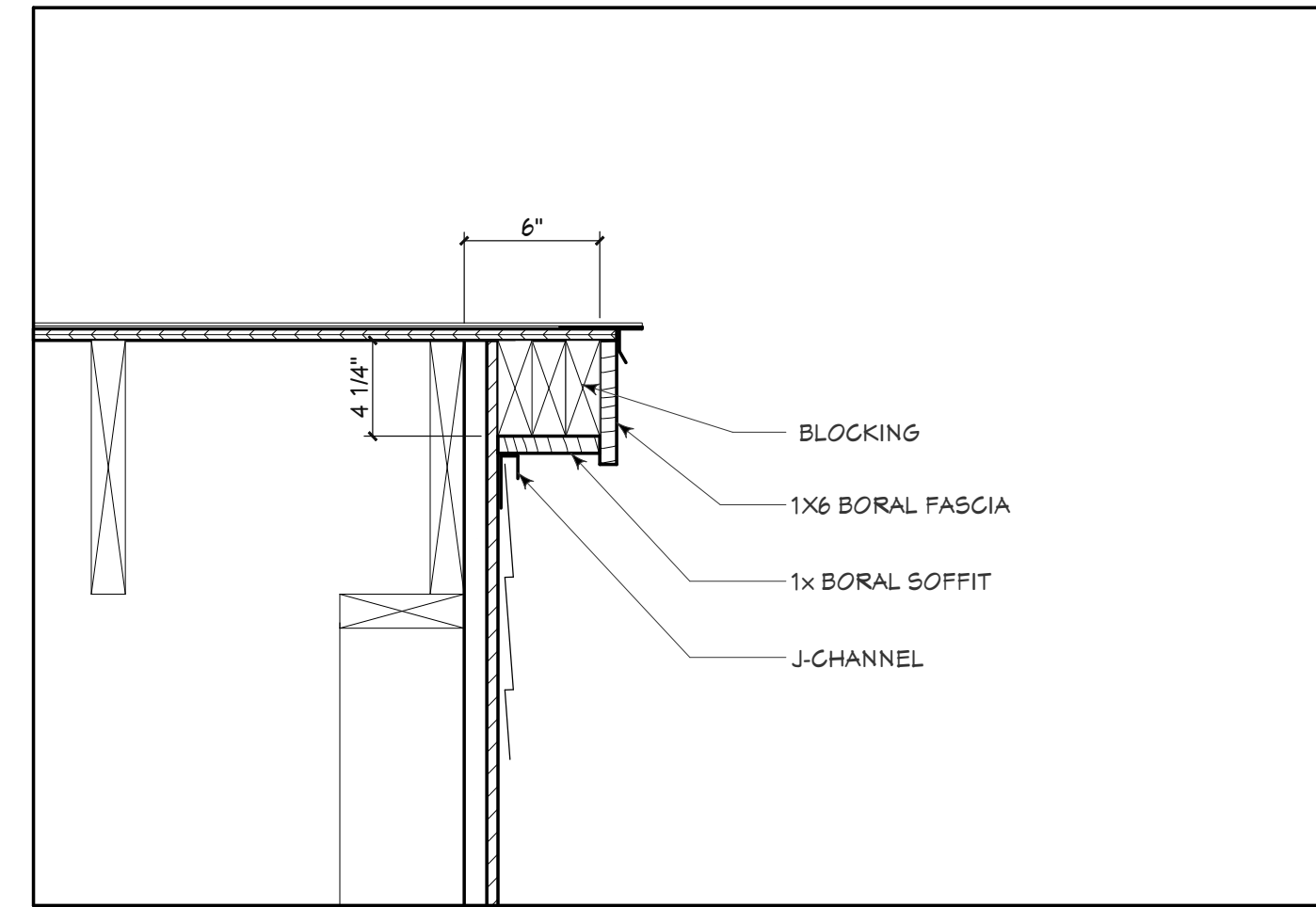


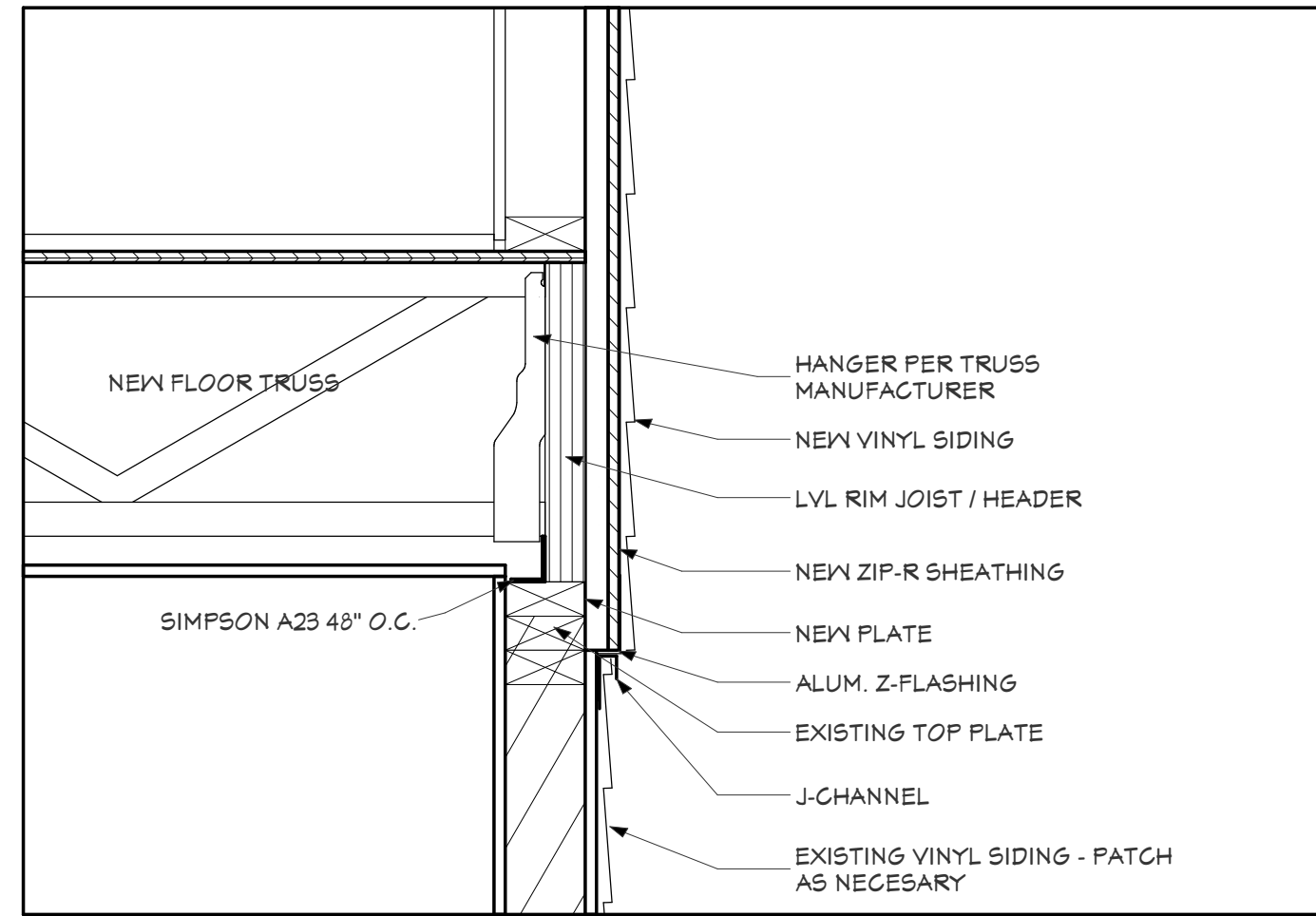
High Eave Detail  
1 1/2" = 1'-0" 8



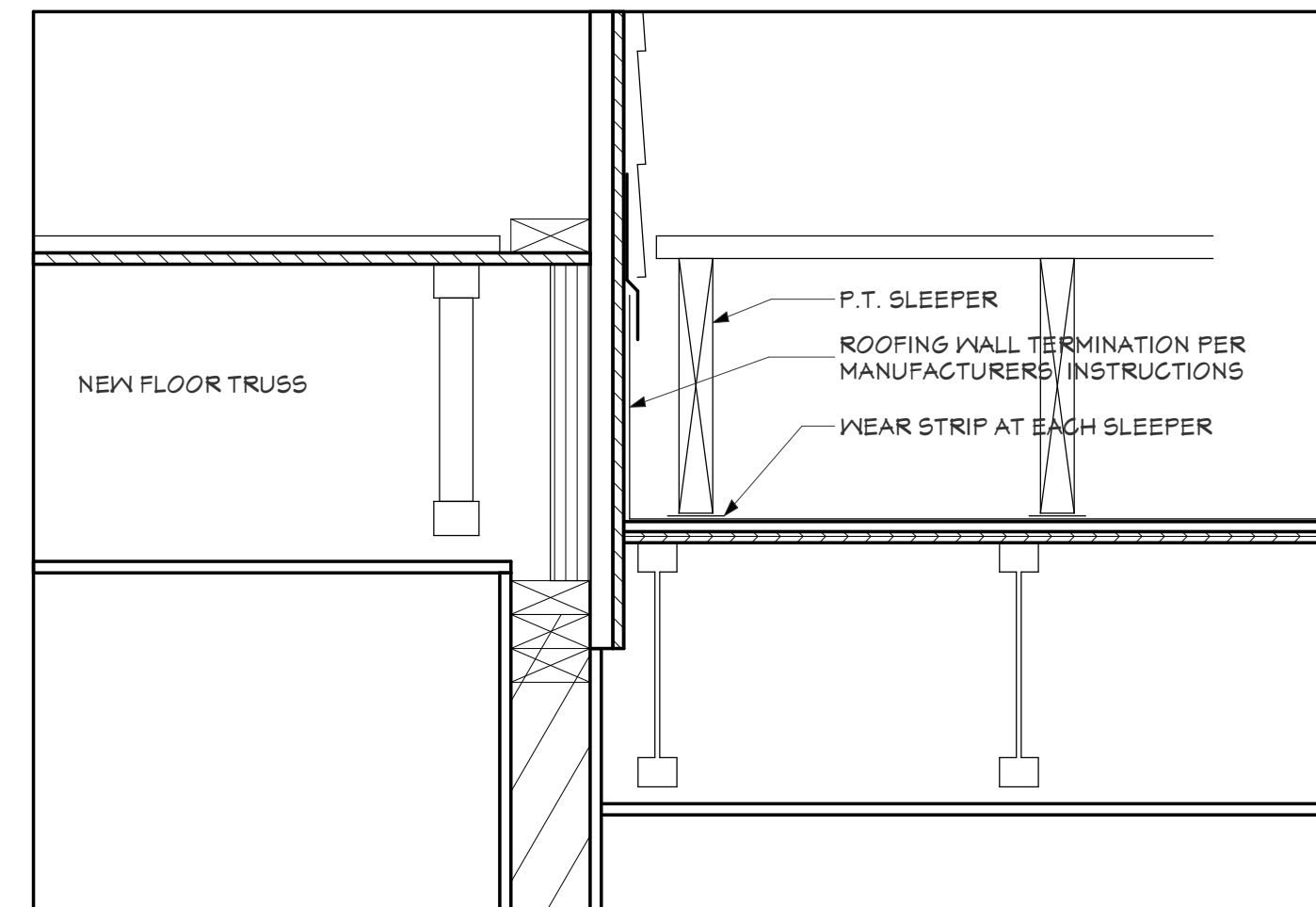
Low Eave Detail  
1 1/2" = 1'-0" 4



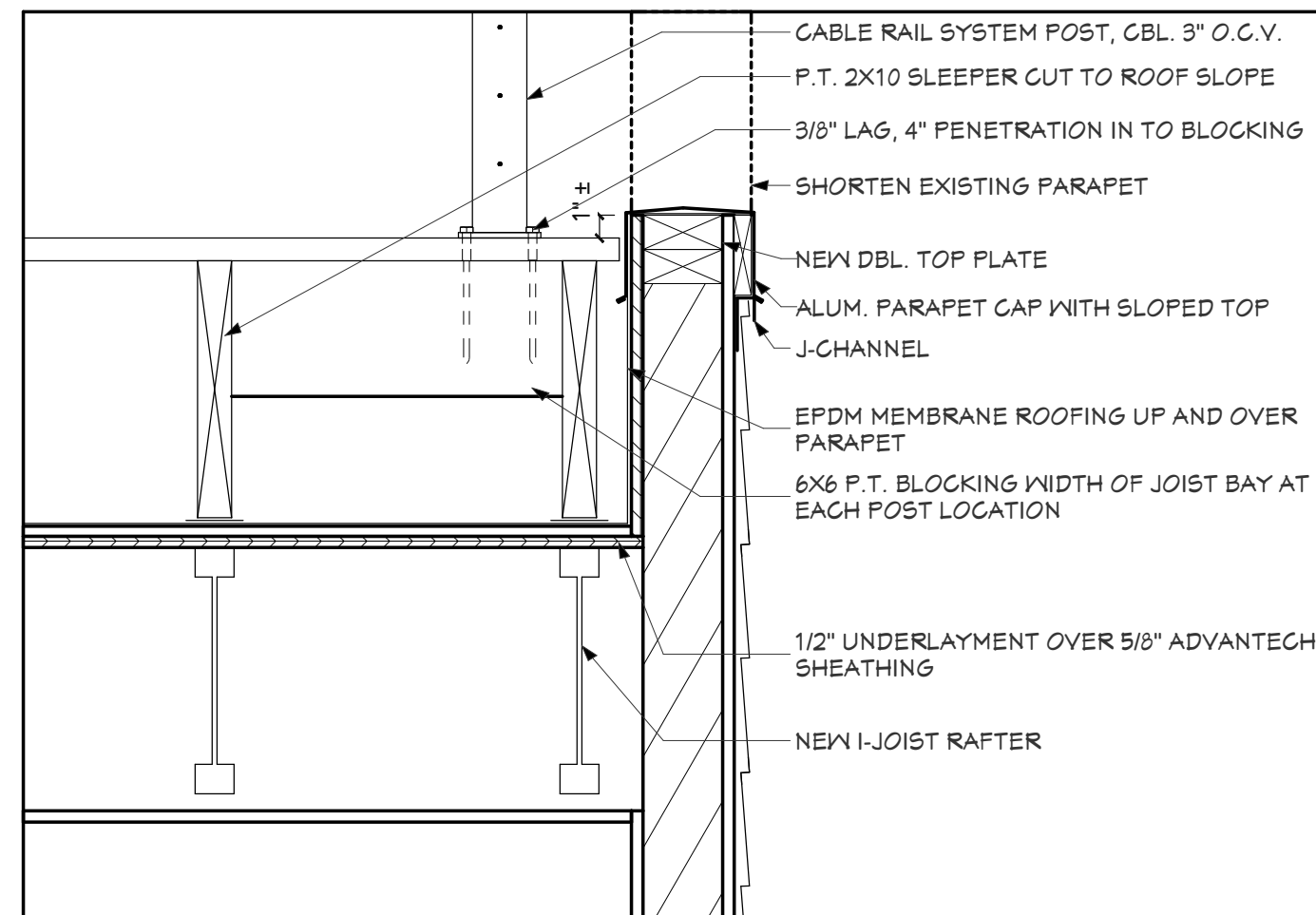
Typical Rake Detail  
1 1/2" = 1'-0" 7



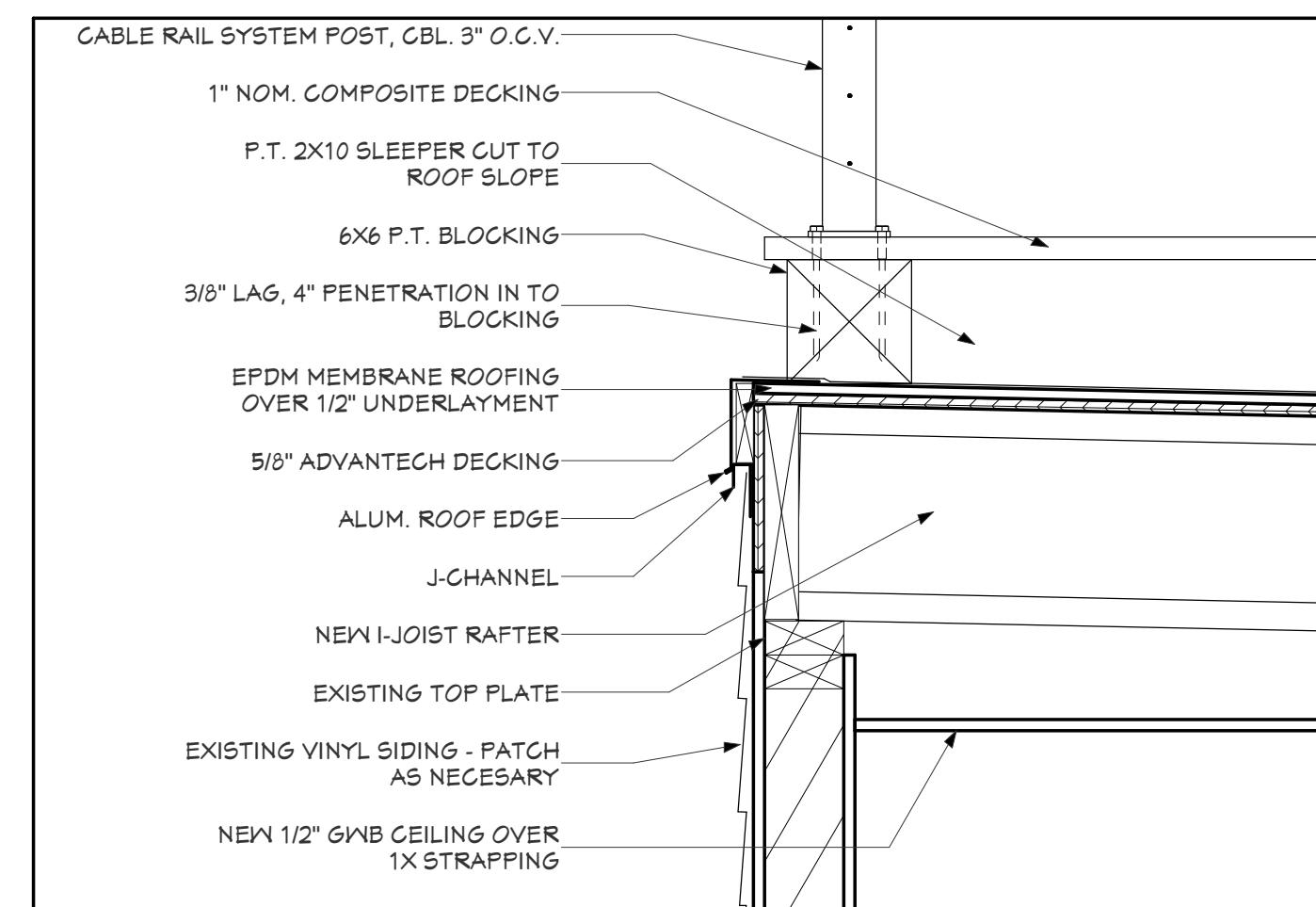
Third Floor Rim Joist-Header Detail  
1 1/2" = 1'-0" 3



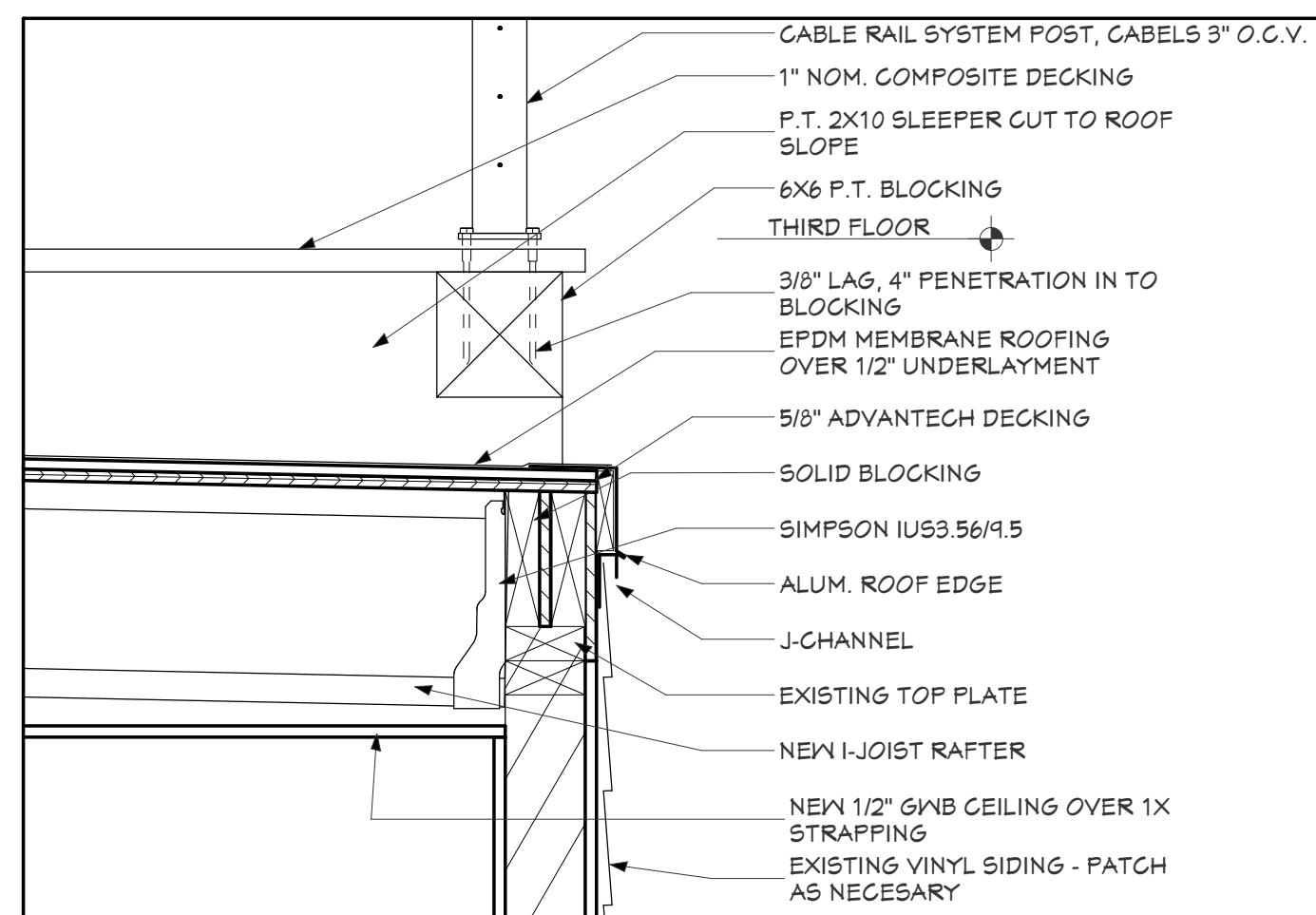
Roof Deck at 3rd Floor Wall  
1 1/2" = 1'-0" 6



Roof Deck at Parapet  
1 1/2" = 1'-0" 2



Roof Deck - High End Detail  
1 1/2" = 1'-0" 5

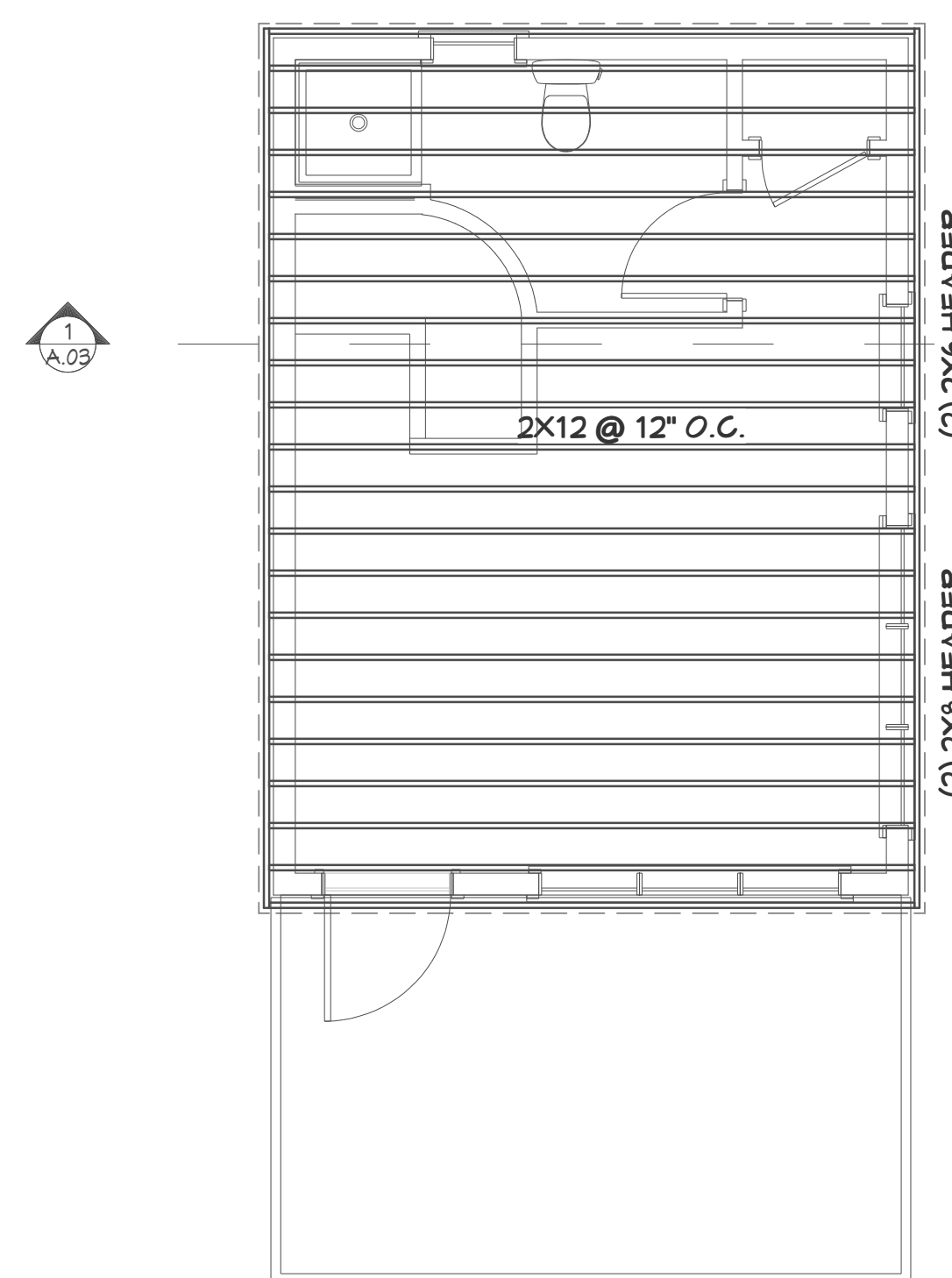


Roof Deck - Low End Detail  
1 1/2" = 1'-0" 1

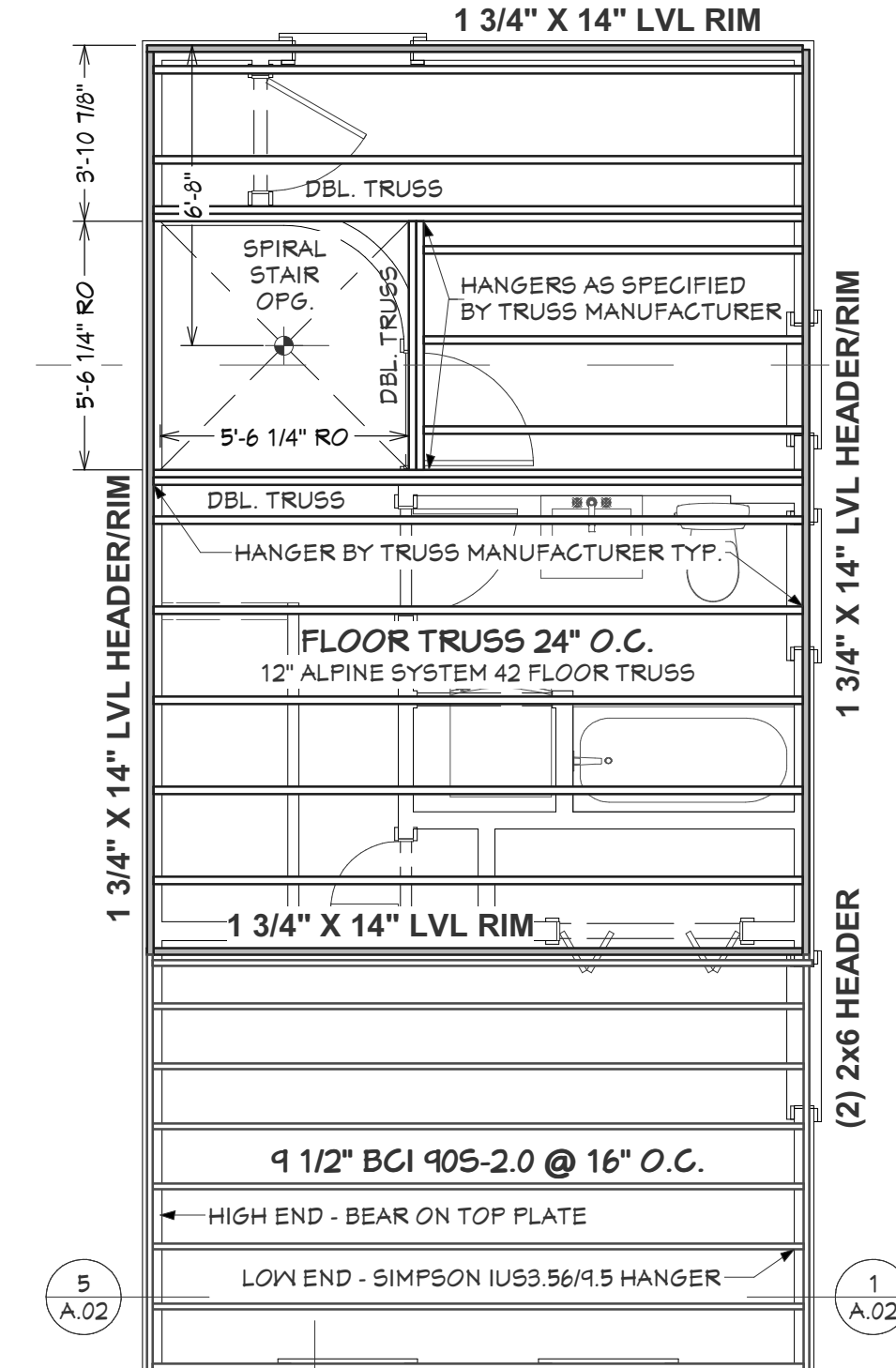
DOOR SCHEDULE									
NUMBER	QTY	FLOOR	R/O	WIDTH	HEIGHT	DESCRIPTION	MANUFACTURER	CODE	COMMENTS
D01	2	2	32 1/2"x82 1/2"	30"	80"	HINGED			
D02	1	2	38 1/2"x80 1/2"	36"	78"	CASED. OFG.			
D03	1	3	38 3/4"x82 1/4"	36"	80"	EXT. HINGED-GLASS	KOLTECH	3068	OUTSWING BLACK
D04	2	3	32 1/2"x82 1/2"	30"	80"	HINGED			

WINDOW SCHEDULE										
NUMBER	QTY	FLOOR	MANUFACTURER	CODE	HEAD	R/O	EGRESS	TEMPERED	DESCRIPTION	COMMENTS
W01	1	3	KOLTECH	2456	84"	25"x57 1/4"		YES	DOUBLE HUNG	WHITE
W02	1	3	KOLTECH	3056	84"	31"x57 1/4"			DOUBLE HUNG	WHITE
W03	2	3	KOLTECH	3056-3	84"	86 5/8"x57 1/4"			MULLED UNIT	WHITE
W04	1	3	KOLTECH	3624	110 3/4"	37 1/4"x25 1/4"			ANNING	BLACK
W05	1	2	KOLTECH	3857	92"	34"x57 1/4"	YES		DOUBLE HUNG	WHITE
W06	1	1	KOLTECH	3224	96"	33 1/4"x25 1/4"			ANNING	WHITE

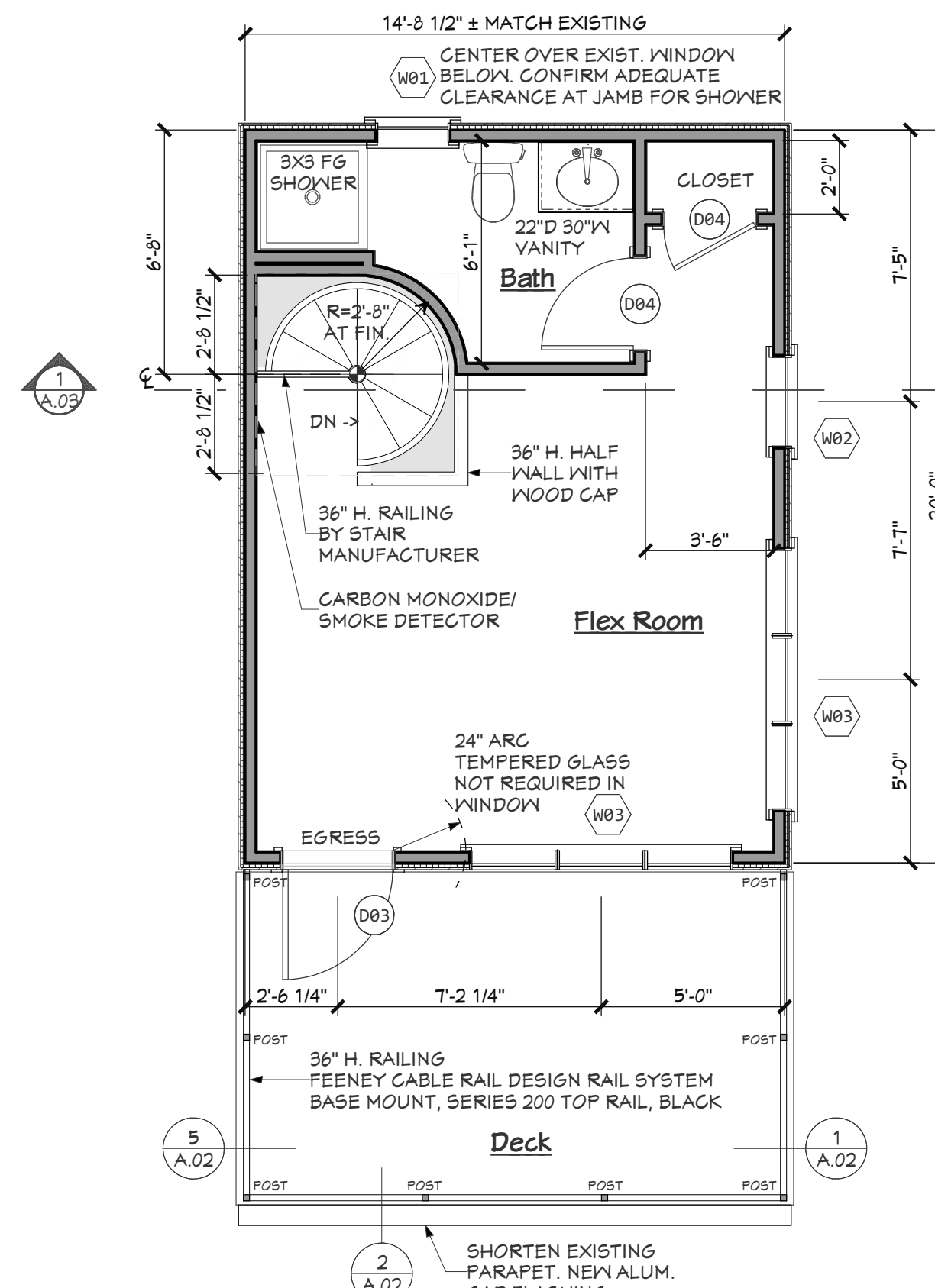
KOLTECH SELECT WINDOWS, LOW E GLAZING WITH ARGON (U=24)



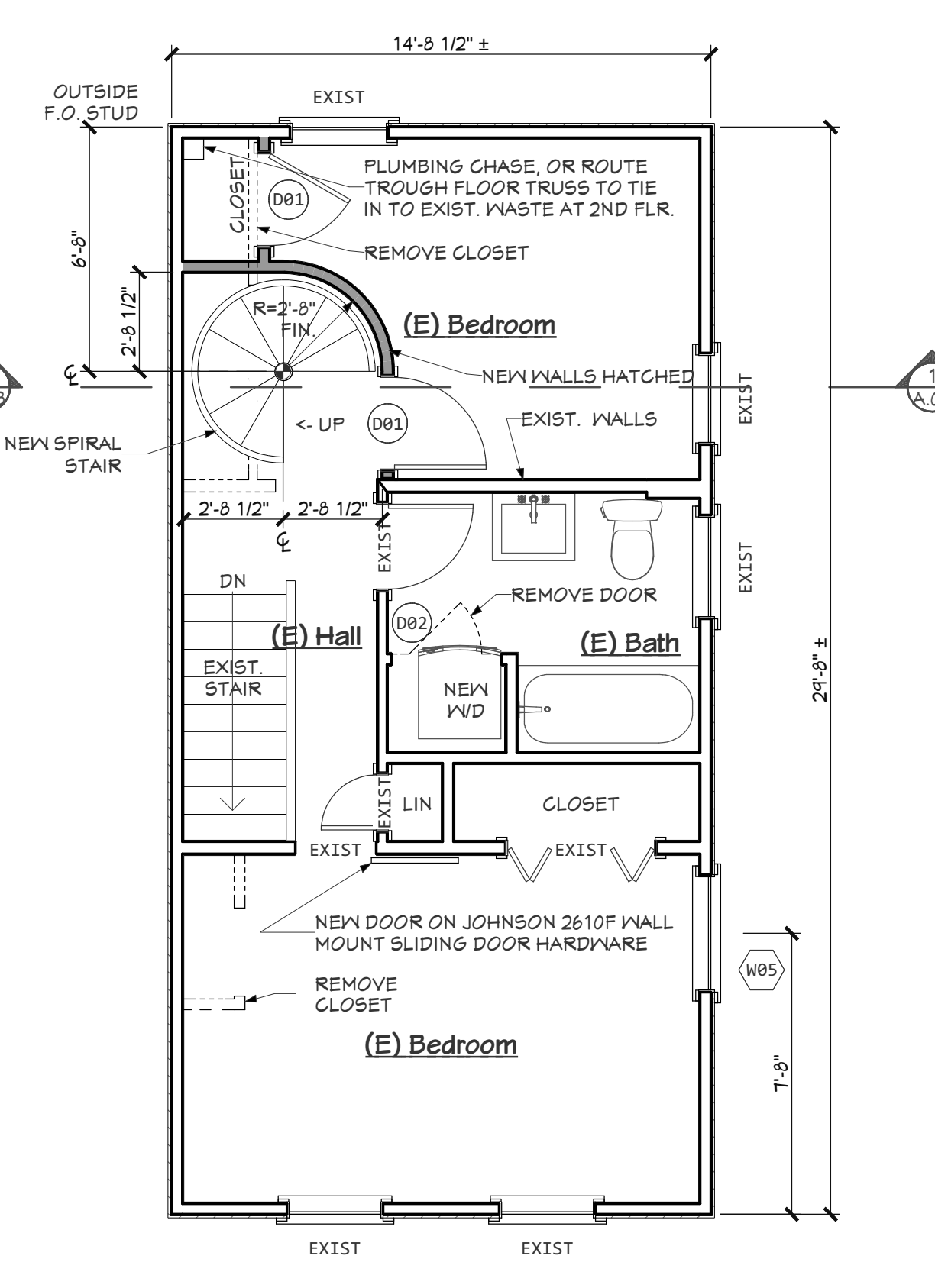
Roof Framing Plan : 1/4 in = 1 ft



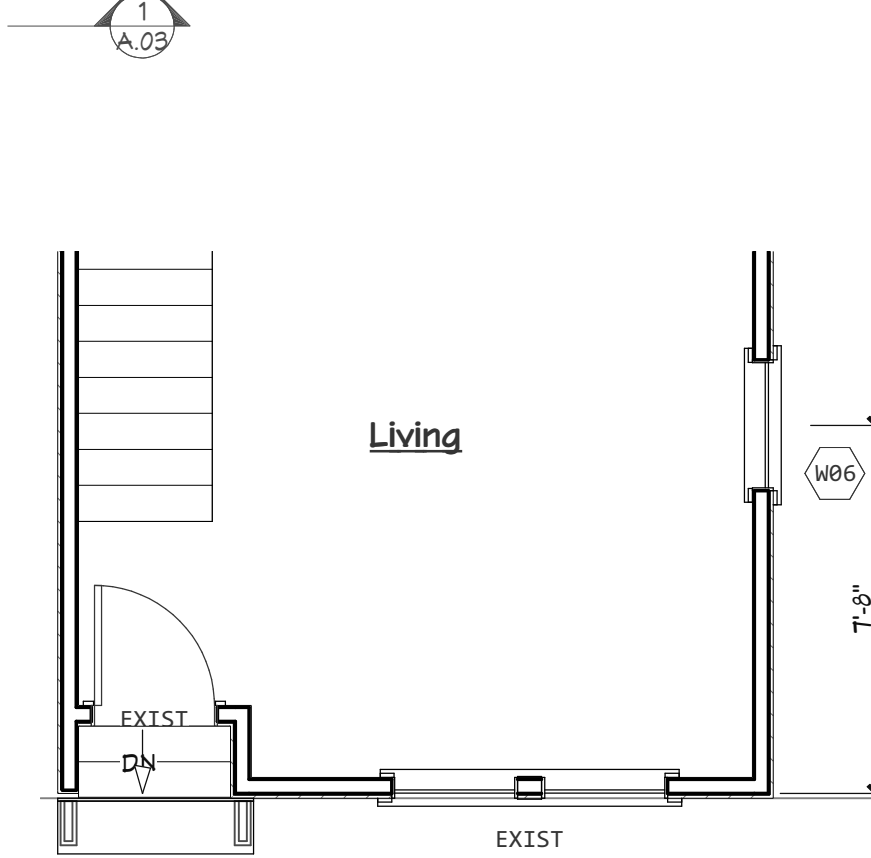
Third Floor Framing Plan : 1/4 in = 1 ft



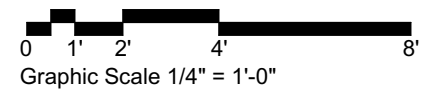
New Third Floor Plan : 1/4 in = 1 ft



Second Floor Plan : 1/4 in = 1 ft

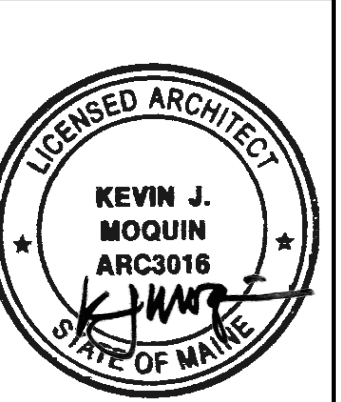


Partial First Floor Plan : 1/4 in = 1 ft



Kevin Moquin Architect  
 km  
 Portland, ME  
 Info@km-a.me  
 (207)-615-6421  
 Revisions:

Gartland  
 Addition  
 18 Fox St.  
 Portland, ME



Proposed  
 Plans &  
 Details

6/29/2017  
**A.02**  
 PERMIT SET